



Opus

1715 sq. ft.

1 Bedroom + Flex | 2 Baths

Optional basement development - 1236 sq. ft.

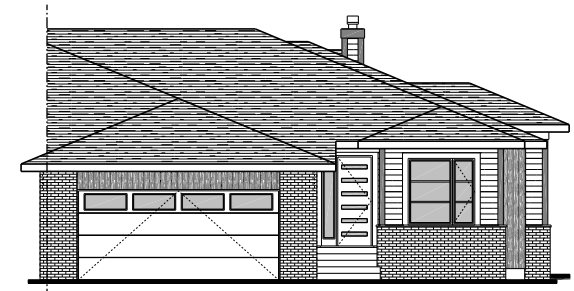
Like a fine vintage wine, our Opus model has its own unique flavor. Marrying beautiful design and meticulous attention to detail, it embodies everything that you desire in a finely crafted home.

Upon entering, you'll notice the neatly organized mud room and opposite that, a convenient flex room which can be transformed into a second bedroom, should you choose. Walk past the finely crafted railings leading downstairs into the expertly planned kitchen, boasting ample storage and you're sure to appreciate the thoughtful placement of the sink as well as the abundant food prep and casual dining space the expansive island provides.

The opulence extends to the great room, where a stunning fireplace enhances the unique appeal of this beautifully crafted home. A large covered deck awaits you on those days when you want to have a leisurely day to yourself outdoors.

The master suite features a coffered, painted ceiling and a spa-like ensuite which includes a luxurious tub, dual sinks, and a generous walk-in closet.

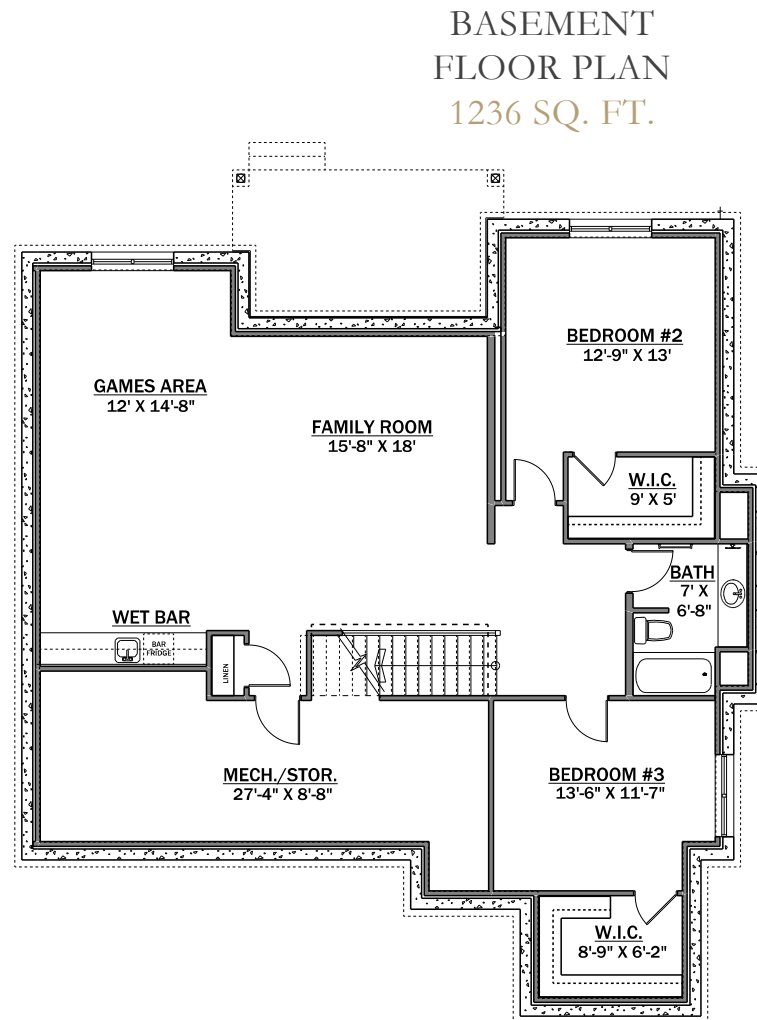
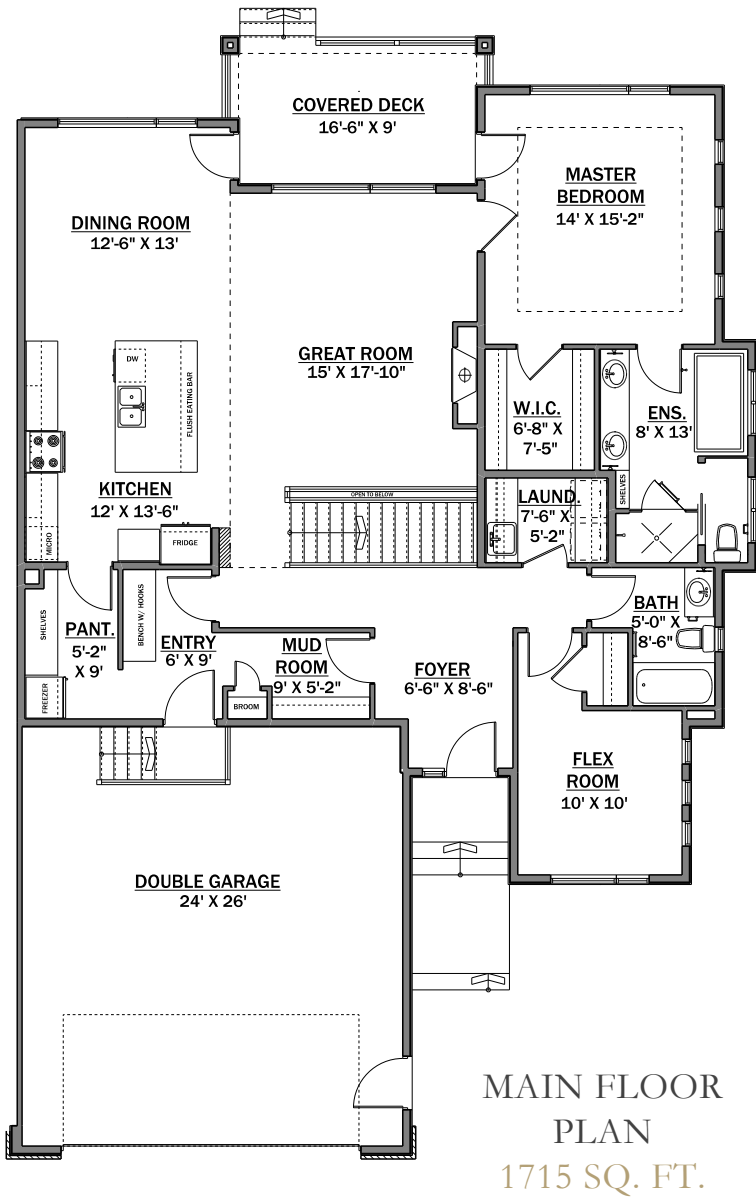
Downstairs, customizable space for additional bedrooms, a full bathroom, wet bar area and lifestyle space completes this functional, beautiful residence.



*Modern Prairie Elevation
2-Car Garage*



CAVANAGH



Expect the best:

- Raised ceilings on main floor
- Oversized, triple glazed Sunstop windows
- Granite countertops throughout
- Substantial selection of hardwood flooring
- Ceramic tile in bathrooms and laundry room, as per plan
- Stained or painted hand railing with wrought iron decorative spindles including a featured pattern and choice of select standard colors/finishes
- Direct vent gas fireplace with fan and custom built paint grade mantle, as per plan
- Grand tiled shower
- 8' Doors on main floor
- Zoned heating system with smart thermostats
- Floor drain in garage
- Electric car charger
- Gas to range and deck