



# YOUR GUIDE TO GREAT NEIGHBOURHOODS IN THE EDMONTON AREA

# Introduction

---

Whether you're just moving to the Edmonton area or are finally looking for a place of your own, you need a neighbourhood that suits your lifestyle. As a growing city, Edmonton has a lot to offer to those who choose to make it their home. Take a look at these communities to find one that's right for you.



# Table of Contents

---

Ambleside .....	4
Aster .....	6
Crystallina .....	8
Cy Becker .....	10
Desrochers .....	12
Edgemont .....	14
Glenridding .....	16
Mclaughlin .....	18
Rutherford .....	20
Skyview .....	22
Tamarack .....	24
West Second .....	26
Uplands At Riverview .....	28

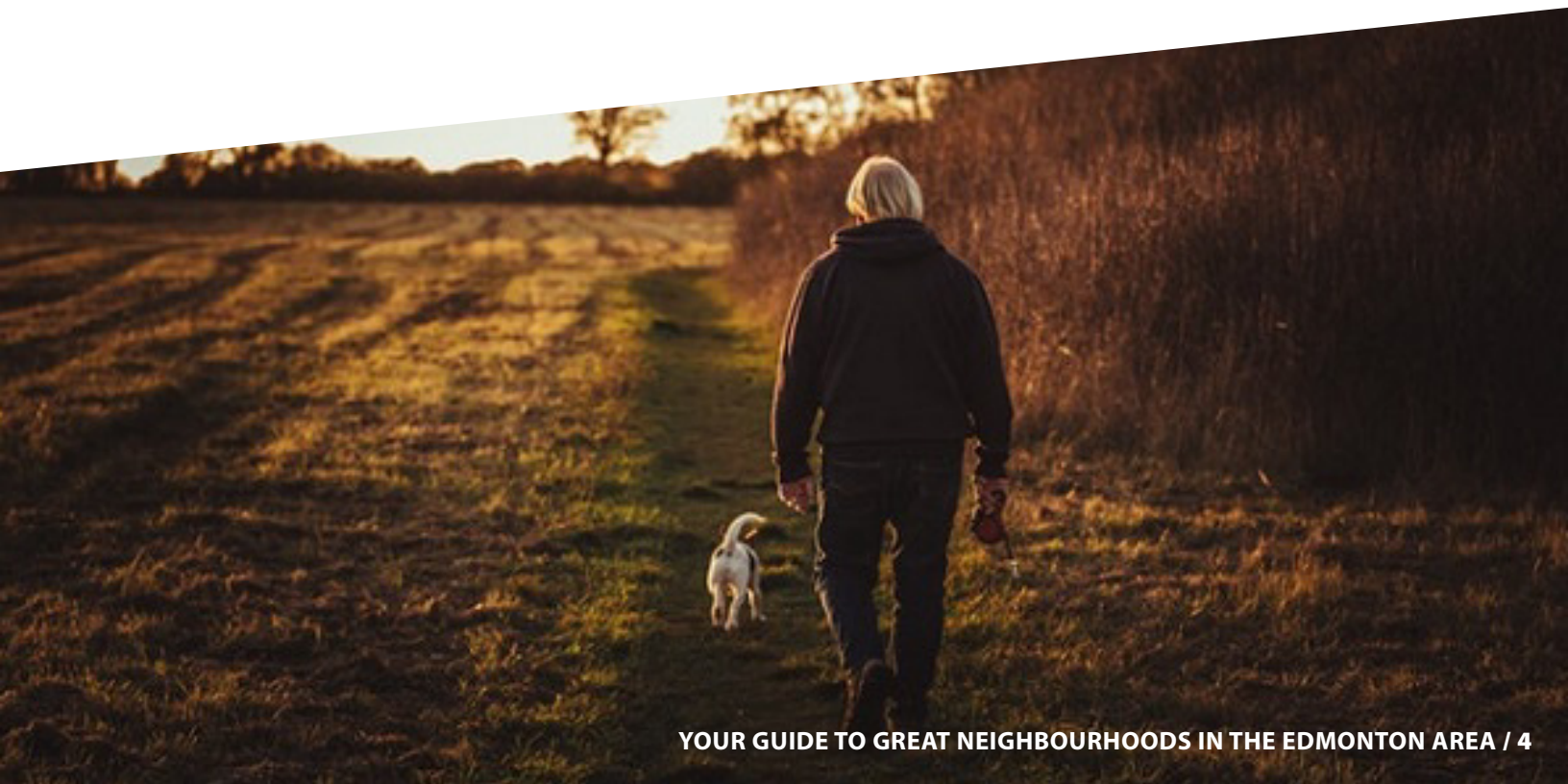


# Ambleside

---

## Live Life on the Ambleside

Ambleside offers wandering walkways and a promenade framed by established trees and greenery – so whether you walk, jog or bike the interconnected pathway system will treat you to sights and sounds of a nature with trees, small parks & playgrounds and a large storm water ponds filled with native grasses and aquatic plants.





# Ambleside

---

Ambleside is a maintenance-free bungalow community that offers 1-2 bedroom options, modern finishes including quartz countertops and vinyl plank flooring, attached garages with a private deck, front and back landscaping as well as optional basement developments.



# Aster

---

## Minutes Away from Everything

Aster's convenient location gives you easy access to everything you need. The newly Meadows Community Recreation Centre is just right down the road where you have access to swimming and leisure pools, fitness studio, gyms & outdoor sports fields. With shopping amenities just minutes away, you can pick up groceries, get a hair cut, or go out for dinner without leaving your community!



# Aster

---

Aster is a brand new SE Edmonton community that features our fee simple three-storey townhomes. These popular floor plans offer attached car garages, landscaped front yards & driveways! Our floor plans range from 2 to 3 bedrooms options with modern finishes including quartz countertops and vinyl plank flooring. Hurry in; these homes won't last long !





# Crystallina

---

## Edmonton's Lake District

Nature-lovers will certainly want to take a good look at [Crystallina](#). With lake views, an urban forest, and paved trails, you'll want to spend more time outside. It's location in the heart of North East Edmonton makes it easy to access all the amenities you've come to expect in the modern age.



# Crystallina

---

The Crystallina showhome is located at 17832 78 St NW. The Fremont model offers the elegance you want at a price you can afford. You'll love the extra storage space in the over-sized kitchen island. A second master bedroom offers space for a guest room or for a roommate. The Lombard, which features a large main floor laundry room and an open concept main floor, is another good choice for those wanting a three-bedroom plan.





# Cy Becker

---

## An Active Lifestyle Community

The growing **Cy Becker** neighbourhood is a great choice for those who like to stay active and those who are looking to start a family. It offers year-round enjoyment with a splash park, skating ribbon, scenic walking trails, and tobogganing hills for winter fun. With easy access to the Anthony Henday and the Clareview LRT station, you won't have any trouble getting to work.





# Cy Becker

---

Cy Beckers farmhouse inspired townhomes offer no condo fees, double car garages with driveways and front landscaping. The Harley show suite, found at 1051 Cy Becker Road, is a three-bedroom plan with an open-concept living area on the main floor, perfect for entertaining small groups of friends. With a large master bedroom and two additional rooms, it's a great option for a growing family.



# Desrochers

---

## Live Life in the Valley

If you love to get out and enjoy nature then [Desrochers](#) is the community for you! Tucked neatly in the heart of Heritage Valley, Desrochers is home to 12 acres of man-made wetlands, 13 acres of forests and plenty of parks and pathways. Desrochers does have much more to offer in addition to its beautiful setting because here you'll also be close to transportation, commuter routes, shopping, services and much more.





# Desrochers

---

Whether you're looking for a stacked townhome with a single car garage or a larger three-storey townhome with a double car garage, Desrochers offers flexible living options. You'll also find the beautiful Granville showhome located at 862 Daniels Way. S.W. This model offers over 1200 square feet of opening living space, three bedrooms and a double car attached garage.





# Edgemont

---

## Designed for Active Living

Edgemont in southwest Edmonton is the perfect combo of city and nature. It sits close to shopping centres, services and commuter routes while at the same time providing the natural backdrop on the Wedgewood Creek ravine and ample green space. A neighbourhood designed for active living, you'll benefit from walking paths, parks, rec centres and fitness services. Here too, there are plenty of new and established schools, restaurants and shopping for you to take advantage of when you're not enjoying the outdoors.



# Edgemont

---

The Valens show home is a bungalow-style model, located at 437 Edgemont Road. This model includes over 1,600 square feet of space with an expansive kitchen island and a large covered deck perfect for entertaining indoors and outdoors. The master suite also features a spa-like ensuite with a luxurious tub and dual sinks. Ideal for both retirees and families alike, the Valens has plenty to offer homeowners from all walks of life.





# Glenridding

---

## A Community Rich in Character

With a home in [Glenridding](#), you're never far from anything South Edmonton has to offer. From the Currents of Windermere to South Common, Glenridding offers quick access to Edmonton's leading shopping attractions. With two off leash dog parks within minutes, you'll find it easy to prioritize spending time outdoors when it's all around you.





# Glenridding

---

Glenridding offers flexible living from stacked to three storey townhomes options. The showhome is located at 1203 163 st SW where you can walk through our Chelsea model. With just under 1,100 square feet, it has two bedrooms, an open-concept living room, and even a small bonus room to use as a home office.



# McLaughlin

---

## Parks, Paths, and Parkland

Nestled in the bedroom community of Spruce Grove, the [McLaughlin](#) neighbourhood is within walking distance of all the major amenities you could want. McLaughlin is connected by an inviting network of pathways right into Heritage Grove or to surrounding retail shops. This community offers several parks, playgrounds and green spaces for your family to walk, bike or play in.





# McLaughlin

---

You'll find our new showhome at 50 McLaughlin Drive Spruce Grove, AB. The Fremont model is a three-storey townhome that includes two bedrooms, two and a half bathrooms and an expansive kitchen. With two large windows on the main floor that allow for natural lighting, this home is perfect for entertaining. Step upstairs into the two master bedrooms both with its own en-suite. It works well as a teenager bedroom, guest room or an income suite if you're looking to get a roommate!



# Rutherford

---

## Where Convenience Meets a Close Connection to Nature

If you've been thinking about a home in the countryside but don't want to deal with the long commute, the [Rutherford](#) neighbourhood might be the one for you.

Rutherford is in Southwest Edmonton with easy access to the Anthony Henday and Highway 2. Residents enjoy the many walking trails in the area, but appreciate it's just a short drive to the Currents of Windermere mall.





# Rutherford

---

In visiting a few of the show suites in this neighbourhood, you'll see that StreetSide's Cambria and the McCarran models have a lot of features packed into their square footage. The master bedroom in the Cambria has both an en-suite and a generously-sized walk-in closet, and there's a large laundry room and deck for relaxing outside. The Cambria's In-suite laundry and a tucked away den allow for both convenience and privacy all within this well designed plan. Rutherford also offers townhome plans too if you're looking for a bit more space!



# Skyview

---

## The Heart of North Edmonton

There's nothing quite as satisfying as having a short commute, and that's what you'll get when you choose to live in the [Skyview](#) area – a 15 minute commute to downtown Edmonton and a 20 minute drive to West Edmonton Mall. Shopping is even closer at the Skyview Power Centre, which houses several big-box stores like Home Depot and Best Buy. If you want to get out in nature, there are playground, picnic areas and spray parks all within walking distance.

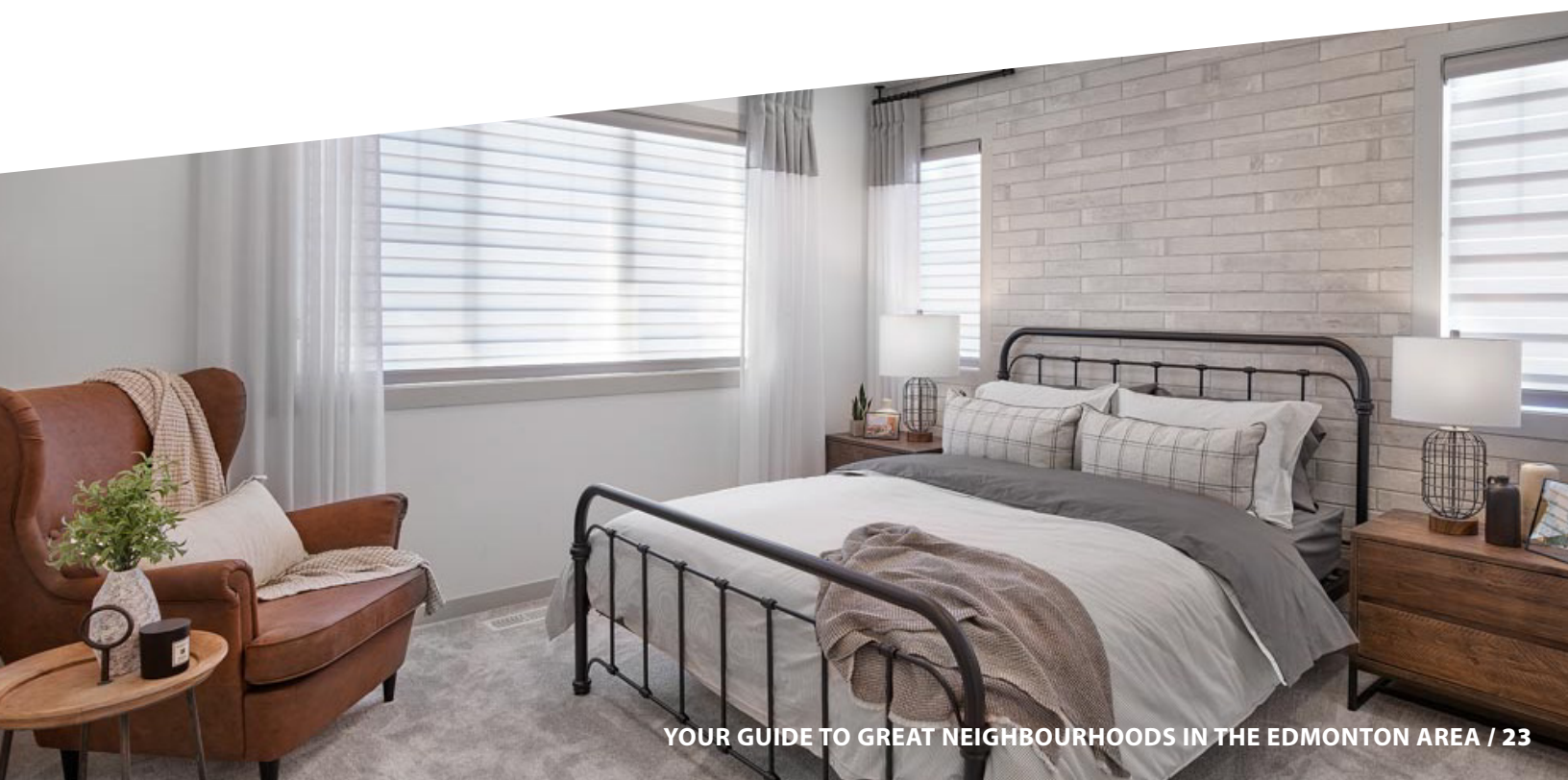




# Skyview

---

In this community, StreetSide offers both condos and townhomes. You'll find that the Aloft condo designs at 12804 140 Ave have a very modern feel and you can even walk out onto the amazing roof top terrace where you can see the downtown skyline. The Townhome designs are planned perfectly to maximize your living space without feeling cramped, and they feature an attached double car garage. Hurry in, as the last construction of the townhomes are underway.



# Tamarack

---

## Crowned Jewel in SE Edmonton

Tamarack is perfectly situated in Southeast Edmonton. With about a 20 minute commute to downtown and plenty of shopping nearby, you'll be able to spend less time driving and more time relaxing. You can take a few swings at the Millwoods Golf Course or head out to the new Meadows Community Recreation Centre, which has a pool, two NHL sized skating rinks, fitness classes, a public library and much more.





# Tamarack

---

Tamarack offers you both townhomes and condo options to fit every lifestyle. The condo developments located at 1506 Tamarack Blvd offers innovative floor plans, expansive windows and a ton of amenities like the roof top terrace, fenced pet park and a community garden. The townhomes at 1530 Tamarack Blvd have two new showhomes that you can walk through; the Fremont with a double master bedroom and Abbey with a den tucked on it's own floor, perfect for a home office.



# West Secord

---

## Newest Urban Community

**West Secord** is an urban lifestyle village full of amenities that support community connectedness and walkability. Meander through the multitude of multi-use trails and explore nature or, if you're on a mission, use the trails to take you to services, restaurants, grocery stores and more. A short drive also connects you to Costco, The River Cree Resort and Casino, West Edmonton mall and West Henday Promenade – a convenient, one-stop shopping & service destination for west end communities.





# West Secord

---

Our new Nordic Village is coming soon to West Secord. With a nordic inspiration at the heart of our design choices, we've created a community that offers both three-storey townhomes & urban flats. With studio, one and two bedroom homes available, we have a home for every budget. All homes will include quartz countertops, vinyl plank flooring, contemporary kitchens and more!





# Uplands at Riverview

## An Urban Adventure

As one of the newest communities StreetSide is developing, the [Uplands at Riverview](#) offers a great opportunity to get into a brand-new community. The name comes from its elevated position in the Riverview area. This means no matter where your home is, you'll always get a great view. When you live in the Uplands at Riverview, you'll be close to Fort Edmonton Park, four different golf courses, and all the shopping you need.





# Uplands at Riverview

Uplands at Riverview offers fee simple townhomes with fenced, landscaped front yards and driveways. Walk through the showhomes at 19326 27 Ave. Our most popular, the Harley model offers 1256 sqft of open concept living with a large master bedroom and two additional rooms. The Abbey model also offers an open concept main floor, walk in shower in the en-suite and an additional bedroom on the main floor that can be used as a guest bed or a private office.

